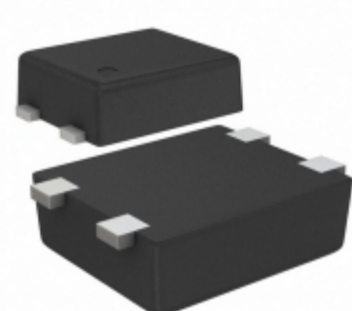


## S-1009C42I-I4T1U



**SII** SII Semiconductor Corporation

**Part Number:** [S-1009C42I-I4T1U](#)

**Manufacturer:** [SII Semiconductor Corporation](#)

**Description:** IC VOLT DETECTOR

**Data sheet:** [S-1009 Series](#)

**RoHS Status:** Lead free / RoHS Compliant

**Ship From:** Hong Kong

**Shipment Way:** DHL/Fedex/TNT/UPS/EMS

Images are for reference only.  
See Product Specifications for product details.  
**Buy S-1009C42I-I4T1U with confidence from Component-World.HK, 1 Year Warranty**

[Request For Quotation](#)

### PRODUCT PARAMETER

|   |   |  |   |
|---|---|--|---|
| <b>Part Number</b>                      | S-1009C42I-I4T1U                          | <b>Manufacturer</b>                    | <a href="#">SII Semiconductor Corporation</a>     |
| <b>Description</b>                      | IC VOLT DETECTOR                          | <b>Lead Free Status / RoHS Status</b>  | Lead free / RoHS Compliant                        |
| <b>Quantity Available</b>               | 247215 pcs                                | <b>Data sheet</b>                      | <a href="#">S-1009 Series</a>                     |
| <b>Category</b>                         | <a href="#">Integrated Circuits (ICs)</a> | <b>Voltage - Threshold</b>             | 4.2V  |
| <b>Type</b>                             | Voltage Detector                          | <b>Supplier Device Package</b>         | SNT-4A  |
| <b>Series</b>                           | S-1009                                    | <b>Reset Timeout</b>                   | -   |
| <b>Reset</b>                            | Active Low                                | <b>Packaging</b>                       | Tape & Reel (TR)                                  |
| <b>Package / Case</b>                   | 4-SMD, Flat Leads                         | <b>Output</b>                          | Push-Pull, Totem Pole                             |
| <b>Other Names</b>                      | 1662-1179-2<br>S-1009C42I-I4T1U-ND        | <b>Operating Temperature</b>           | -40°C ~ 85°C (TA)                                 |
| <b>Number of Voltages Monitored</b>     | 1   | <b>Mounting Type</b>                   | Surface Mount                                     |
| <b>Moisture Sensitivity Level (MSL)</b> | 1 (Unlimited)                             | <b>Manufacturer Standard Lead Time</b> | 20 Weeks  |
| <b>Lead Free Status / RoHS Status</b>   | Lead free / RoHS Compliant                | <b>Detailed Description</b>            | Supervisor Push-Pull, Totem Pole 1 Channel SNT-4A |

Component-World.com is a Reliable Stocking Distributor of Electronic Components. We specialize in all SII Semiconductor Corporation series electronic components. We have 247215 pieces of SII Semiconductor Corporation S-1009C42I-I4T1U in stock available now. Request a quote from electronics components distributor at Component-World.com, our sales team will contact you within 24 hours.  
RFQ Email: [info@Components-World.com](mailto:info@Components-World.com)

### RELATED PRODUCTS

|  |  |   |                     |
|--|--|---|---------------------|
|  | <b>Part#:</b> <a href="#">S-1009C43I-N4T1U</a><br><b>Description:</b> IC VOLT DETECTOR | <b>Manufacturers:</b> <a href="#">SII Semiconductor Corporation</a> | <a href="#">RFQ</a> |
|  | <b>Part#:</b> <a href="#">S-1009C40I-M5T1U</a><br><b>Description:</b> IC VOLT DETECTOR | <b>Manufacturers:</b> <a href="#">SII Semiconductor Corporation</a> | <a href="#">RFQ</a> |
|  | <b>Part#:</b> <a href="#">S-1009C42I-M5T1U</a><br><b>Description:</b> IC VOLT DETECTOR | <b>Manufacturers:</b> <a href="#">SII Semiconductor Corporation</a> | <a href="#">RFQ</a> |
|  | <b>Part#:</b> <a href="#">S-1009C39I-H4T1U</a><br><b>Description:</b> IC VOLT DETECTOR | <b>Manufacturers:</b> <a href="#">SII Semiconductor Corporation</a> | <a href="#">RFQ</a> |
|  | <b>Part#:</b> <a href="#">S-1009C43I-M5T1U</a><br><b>Description:</b> IC VOLT DETECTOR | <b>Manufacturers:</b> <a href="#">SII Semiconductor Corporation</a> | <a href="#">RFQ</a> |
|  | <b>Part#:</b> <a href="#">S-1009C41I-N4T1U</a><br><b>Description:</b> IC VOLT DETECTOR | <b>Manufacturers:</b> <a href="#">SII Semiconductor Corporation</a> | <a href="#">RFQ</a> |
|  | <b>Part#:</b> <a href="#">S-1009C39I-M5T1U</a><br><b>Description:</b> IC VOLT DETECTOR | <b>Manufacturers:</b> <a href="#">SII Semiconductor Corporation</a> | <a href="#">RFQ</a> |
|  | <b>Part#:</b> <a href="#">S-1009C44I-N4T1U</a><br><b>Description:</b> IC VOLT DETECTOR | <b>Manufacturers:</b> <a href="#">SII Semiconductor Corporation</a> | <a href="#">RFQ</a> |
|  | <b>Part#:</b> <a href="#">S-1009C42I-N4T1U</a><br><b>Description:</b> IC VOLT DETECTOR | <b>Manufacturers:</b> <a href="#">SII Semiconductor Corporation</a> | <a href="#">RFQ</a> |
|  | <b>Part#:</b> <a href="#">S-1009C45I-I4T1U</a><br><b>Description:</b> IC VOLT DETECTOR | <b>Manufacturers:</b> <a href="#">SII Semiconductor Corporation</a> | <a href="#">RFQ</a> |
|  | <b>Part#:</b> <a href="#">S-1009C41I-H4T1U</a><br><b>Description:</b> IC VOLT DETECTOR | <b>Manufacturers:</b> <a href="#">SII Semiconductor Corporation</a> | <a href="#">RFQ</a> |
|  | <b>Part#:</b> <a href="#">S-1009C44I-M5T1U</a><br><b>Description:</b> IC VOLT DETECTOR | <b>Manufacturers:</b> <a href="#">SII Semiconductor Corporation</a> | <a href="#">RFQ</a> |
|  | <b>Part#:</b> <a href="#">S-1009C39I-N4T1U</a><br><b>Description:</b> IC VOLT DETECTOR | <b>Manufacturers:</b> <a href="#">SII Semiconductor Corporation</a> | <a href="#">RFQ</a> |
|  | <b>Part#:</b> <a href="#">S-1009C38I-N4T1U</a><br><b>Description:</b> IC VOLT DETECTOR | <b>Manufacturers:</b> <a href="#">SII Semiconductor Corporation</a> | <a href="#">RFQ</a> |
|  | <b>Part#:</b> <a href="#">S-1009C45I-M5T1U</a><br><b>Description:</b> IC VOLT DETECTOR | <b>Manufacturers:</b> <a href="#">SII Semiconductor Corporation</a> | <a href="#">RFQ</a> |
|  | <b>Part#:</b> <a href="#">S-1009C40I-N4T1U</a><br><b>Description:</b> IC VOLT DETECTOR | <b>Manufacturers:</b> <a href="#">SII Semiconductor Corporation</a> | <a href="#">RFQ</a> |
|  | <b>Part#:</b> <a href="#">S-1009C44I-H4T1U</a><br><b>Description:</b> IC VOLT DETECTOR | <b>Manufacturers:</b> <a href="#">SII Semiconductor Corporation</a> | <a href="#">RFQ</a> |
|  | <b>Part#:</b> <a href="#">S-1009C43I-H4T1U</a><br><b>Description:</b> IC VOLT DETECTOR | <b>Manufacturers:</b> <a href="#">SII Semiconductor Corporation</a> | <a href="#">RFQ</a> |
|  | <b>Part#:</b> <a href="#">S-1009C41I-M5T1U</a><br><b>Description:</b> IC VOLT DETECTOR | <b>Manufacturers:</b> <a href="#">SII Semiconductor Corporation</a> | <a href="#">RFQ</a> |
|  | <b>Part#:</b> <a href="#">S-1009C40I-I4T1U</a><br><b>Description:</b> IC VOLT DETECTOR | <b>Manufacturers:</b> <a href="#">SII Semiconductor Corporation</a> | <a href="#">RFQ</a> |

### Related keywords for S-1009C42I-I4T1U

|  |  |   |  |
|--|--|---|--|
| <a href="#">SII Semiconductor Corporation S-1009C42I-I4T1U</a> | <a href="#">S-1009C42I-I4T1U distributor</a> | <a href="#">S-1009C42I-I4T1U supplier</a> | <a href="#">S-1009C42I-I4T1U price</a> |
| <a href="#">S-1009C42I-I4T1U download datasheet</a>            | <a href="#">S-1009C42I-I4T1U datasheet</a>   | <a href="#">S-1009C42I-I4T1U stock</a>    | <a href="#">buy S-1009C42I-I4T1U</a>   |
| <a href="#">SII Semiconductor Corporation S-1009C42I-I4T1U</a> |  |   |  |